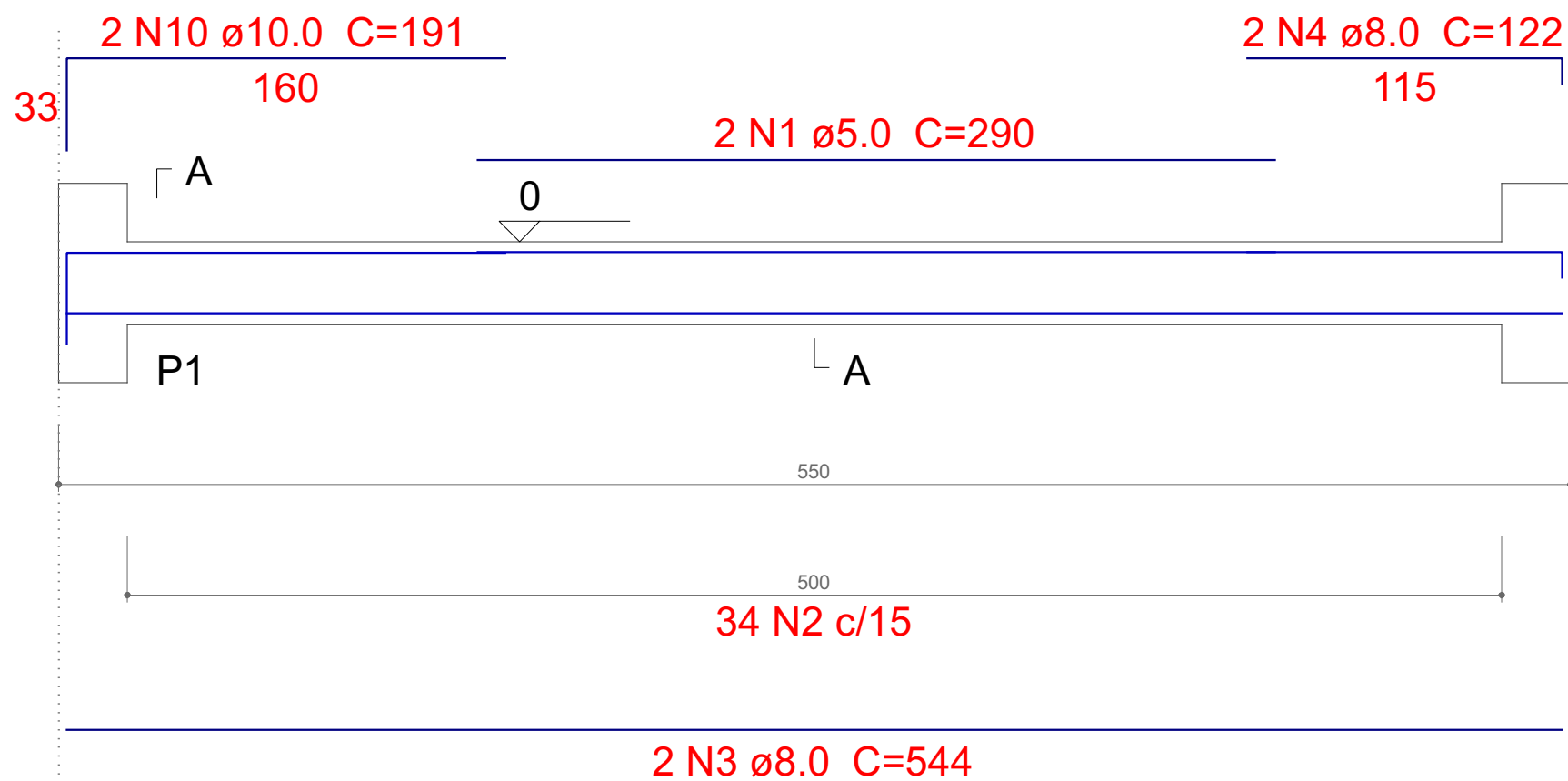


Resumo do aço

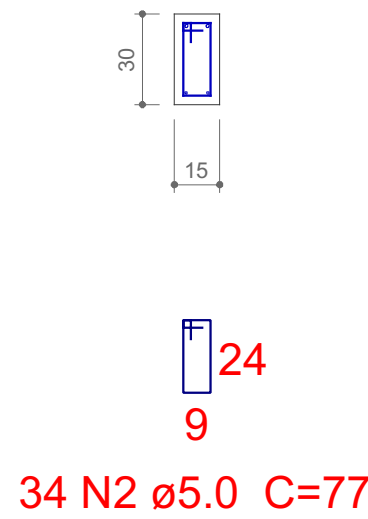
AÇO	DIAM (mm)	C.TOTAL (m)	PESO (kg)
CA50	8.0	32.6	12.9
	10.0	3.9	2.4
	12.5	88.5	85.2
CA60	5.0	149.8	23.1
PESO TOTAL (kg)			
CA50	100.4		
CA60	23.1		

Volume de concreto (C-30) = 1.24 m³  
Área de forma = 20.57 m²

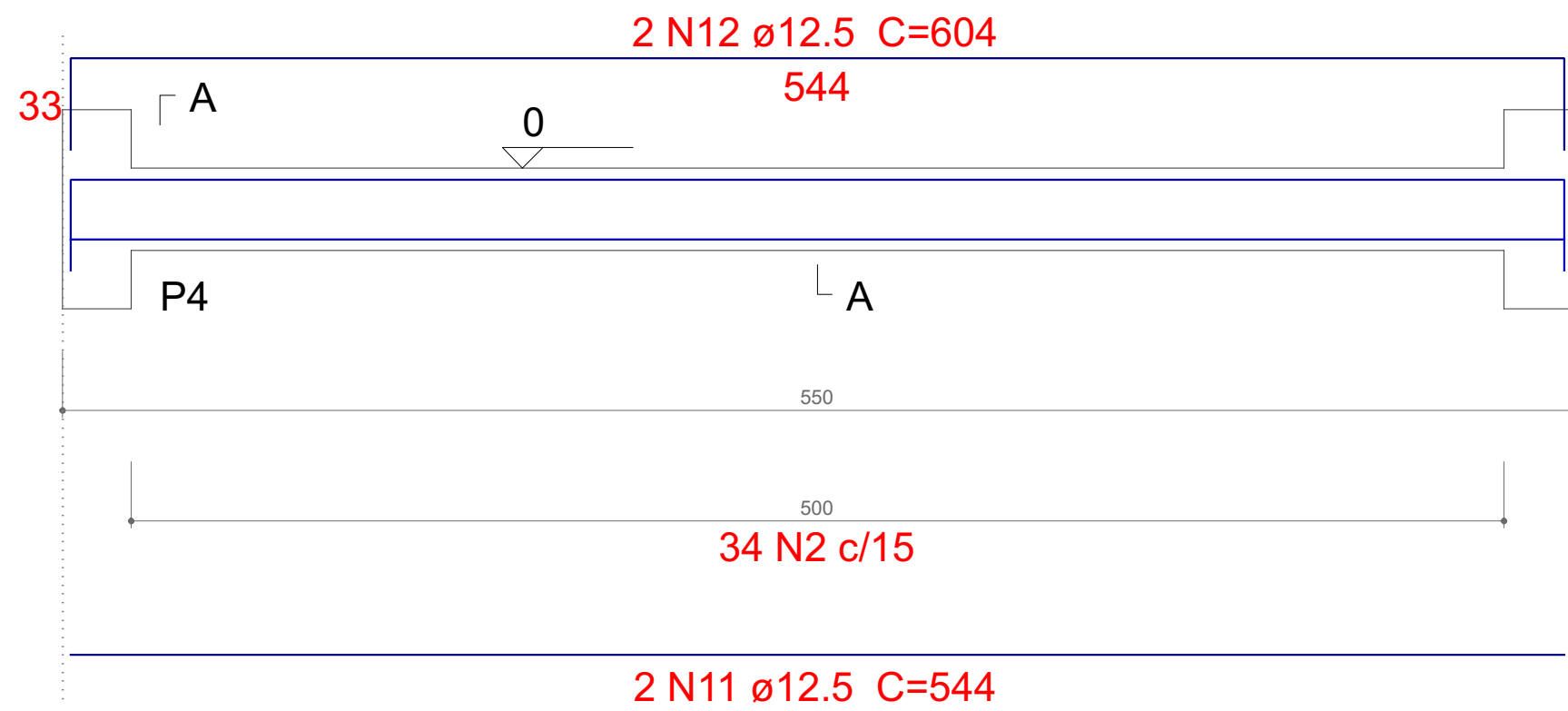
V1  
ESC 1:25



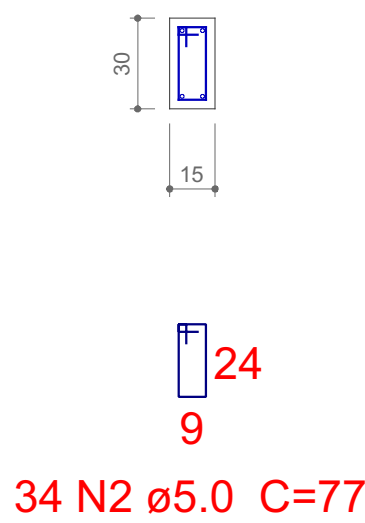
SEÇÃO A-A  
ESC 1:25



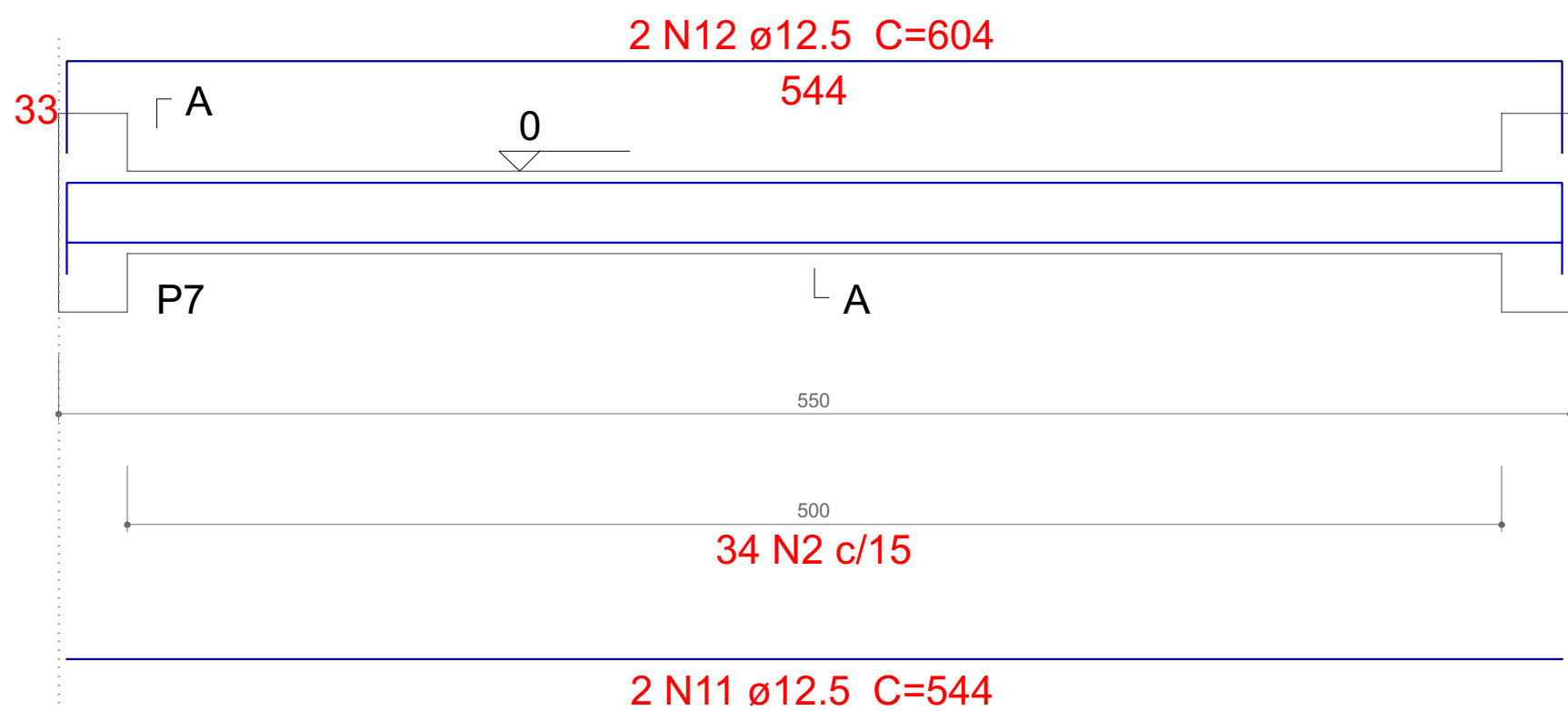
V2  
ESC 1:25



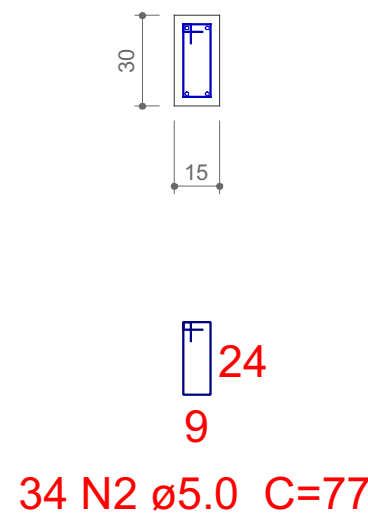
SEÇÃO A-A  
ESC 1:25



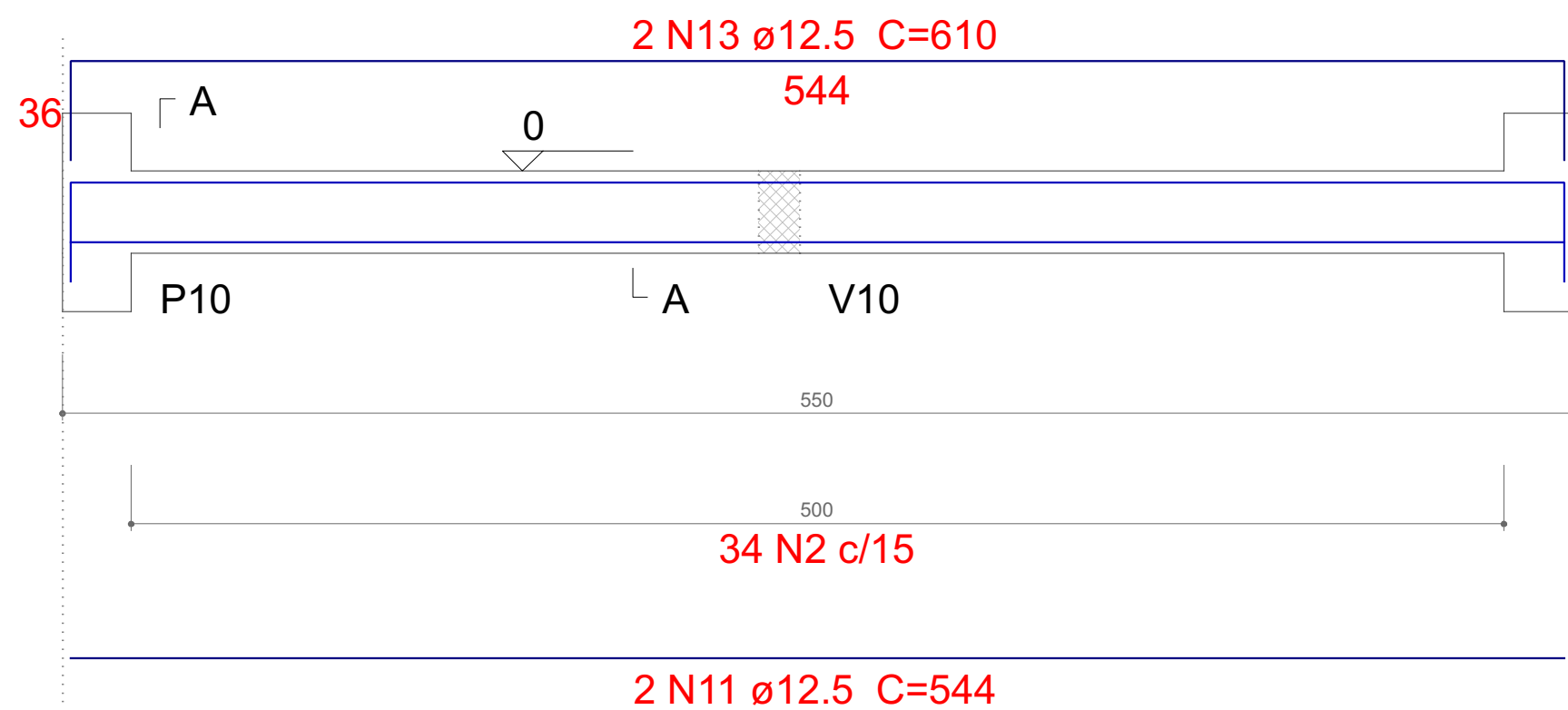
V3  
ESC 1:25



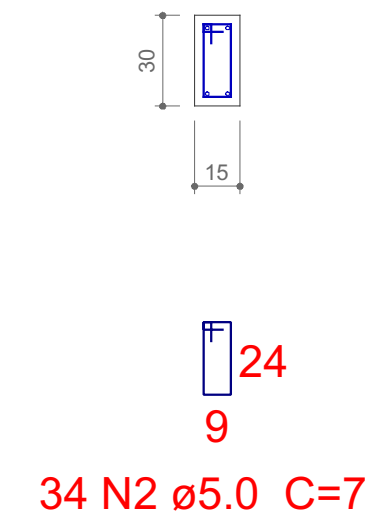
SEÇÃO A-A  
ESC 1:25



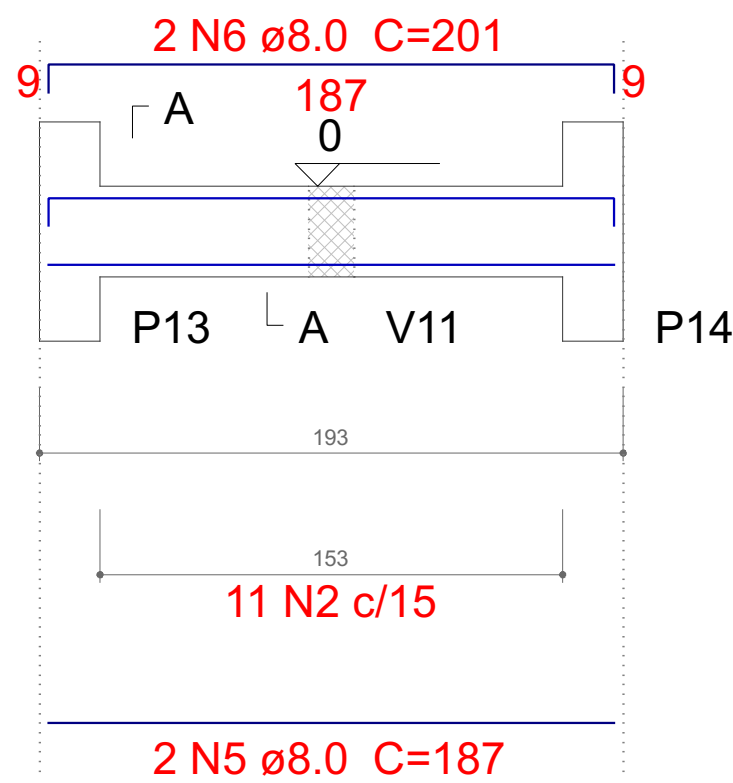
V4  
ESC 1:25



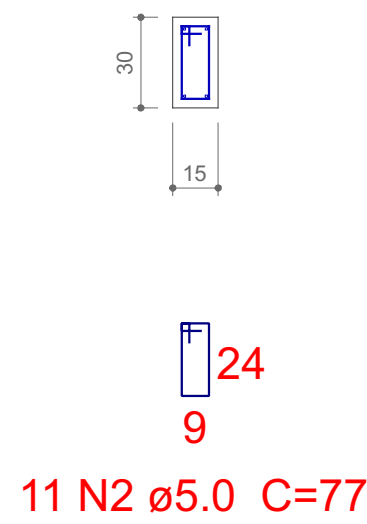
SEÇÃO A-A  
ESC 1:25



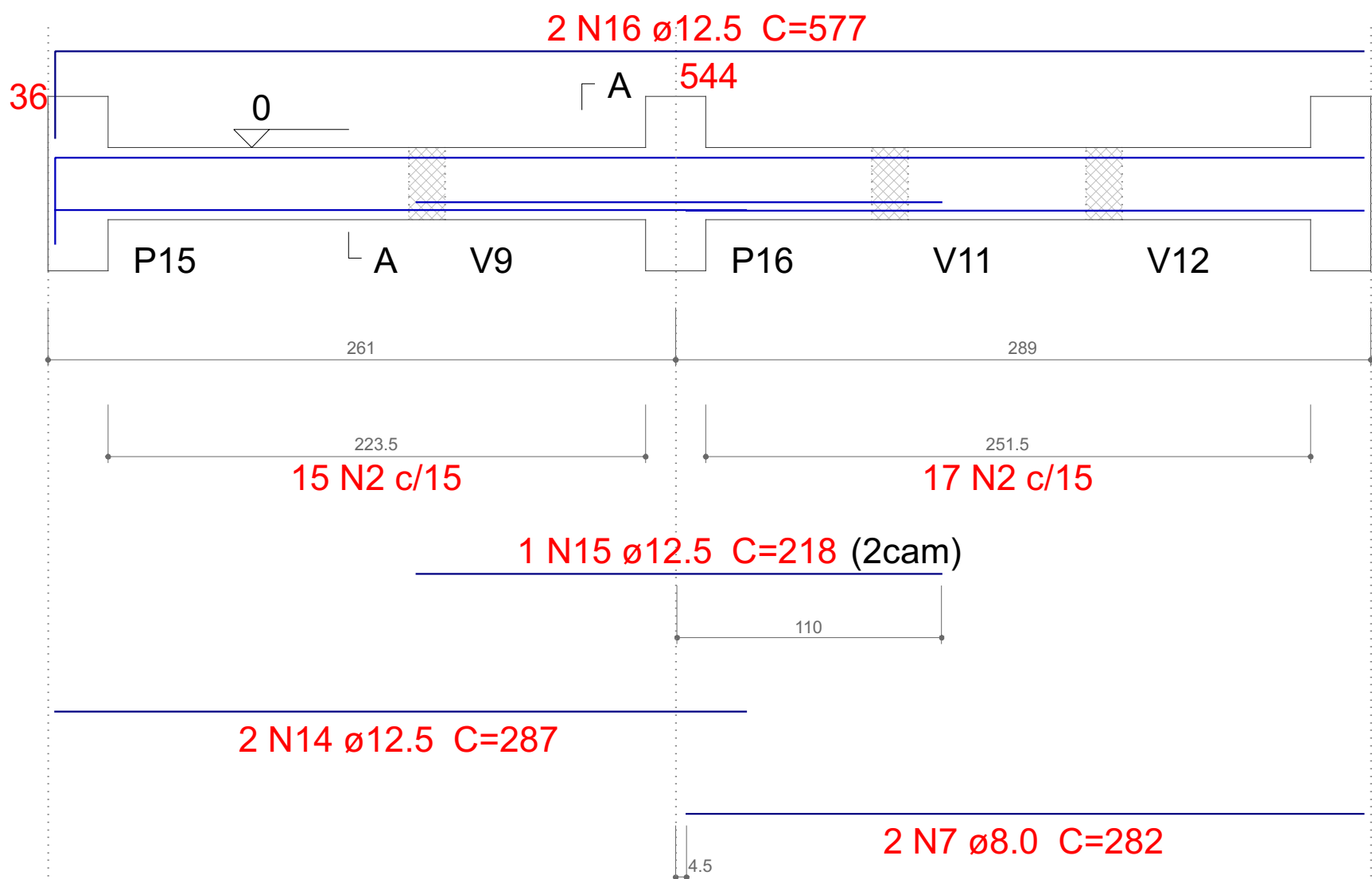
V5  
ESC 1:25



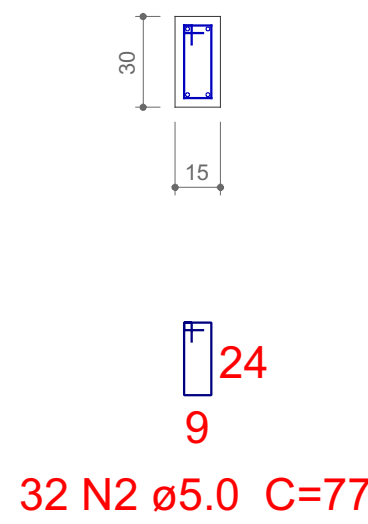
SEÇÃO A-A  
ESC 1:25



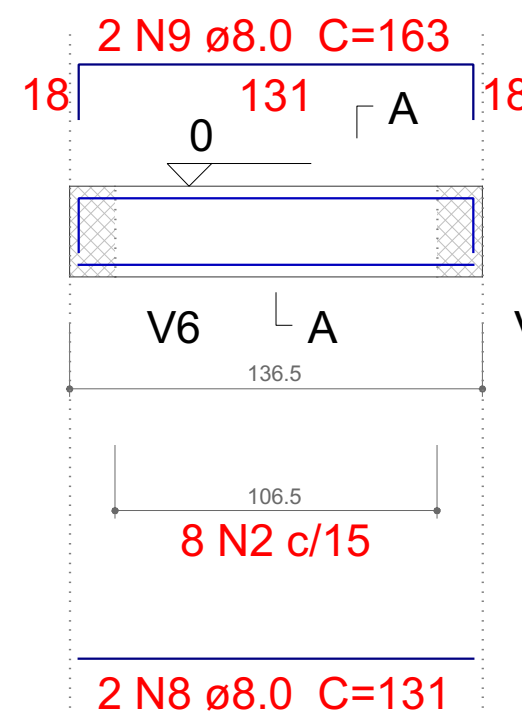
V6  
ESC 1:25



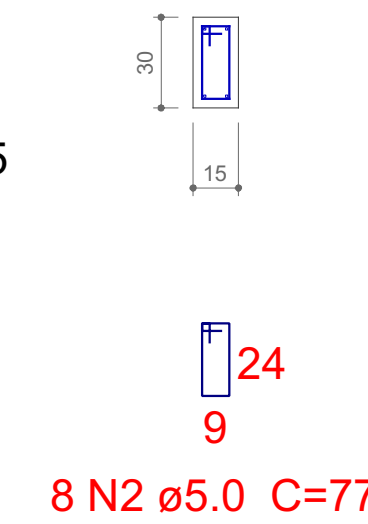
SEÇÃO A-A  
ESC 1:25



V11  
ESC 1:25



SEÇÃO A-A  
ESC 1:25



APROVAÇÃO

Carimbos da Prefeitura Municipal:

ESTATÍSTICA DA OBRA:

Finalidade da obra:  
Emissão inicial



GESTÃO 2021/2024

Obra: Ampliação Corpo de Bombeiros

Local:

LAR. DO SUL/Pr

Escala:

INDICADA

Data:

20/09/2023

Desenho:

WANDER

Endereço da obra:

Rua Barão do Rio Branco - 3º SGB

Proprietário:

PREF. MUN. DE LARANJEIRAS DO SUL  
CNPJ. 76.205.970/0001-95  
AV. HONÓRIO BABINSKI - PAÇO MUNICIPAL Nº 01  
CEP. 85301-000 FONE (042) 3635-8100  
LARANJEIRAS DO SUL/PR

Folha:

2 / 9

Últimas Atualizações:  
20/09/2023

VIGA BALDRAME  
PAV TERREO

Resp. pr Projeto:

SECRETARIA DE OBRAS E URBANISMO  
FONES (042) 3635-8131 e 3635-8107

